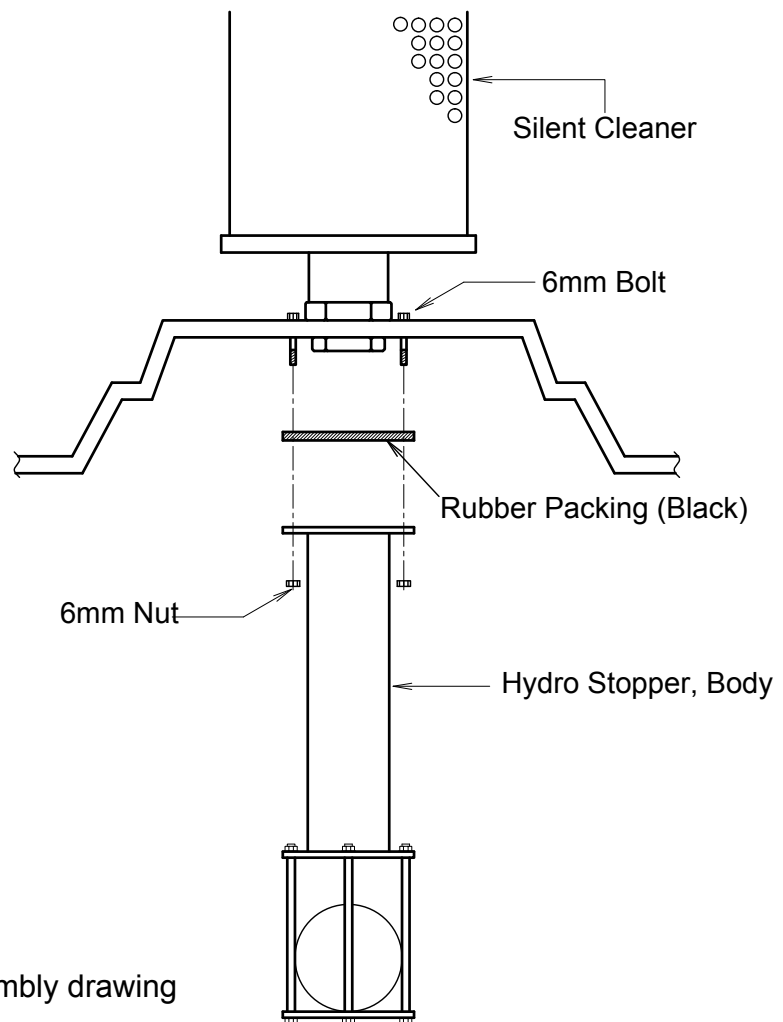


How to attach the Hydro Stopper

How to attach the Hydro Stopper

1. Loosen and take off three 6mm Bolts from the body of Hydro Stopper
2. After taking off the Bolts, put them into the holes on the body of Silent Cleaner
3. Attach the rubber packing (black) with the Bolts
4. Fit the body of Hydro Stopper with the Bolts, and tighten well with 6mm nuts



Hydro Stopper assembly drawing



1-7-28, Yunagi, Minato-ku, Osaka 552-0004 Japan
TEL: +81-6-6572-1207 FAX: +81-6-6572-1256
E-mail: osawa@osawa-company.co.jp